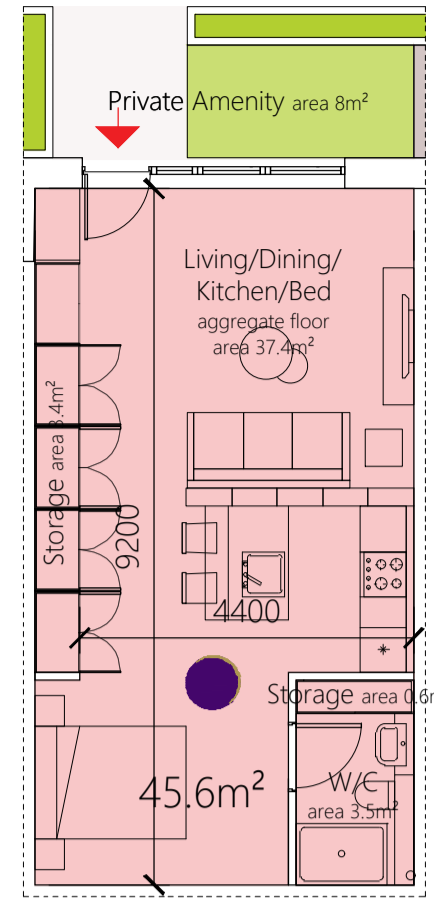
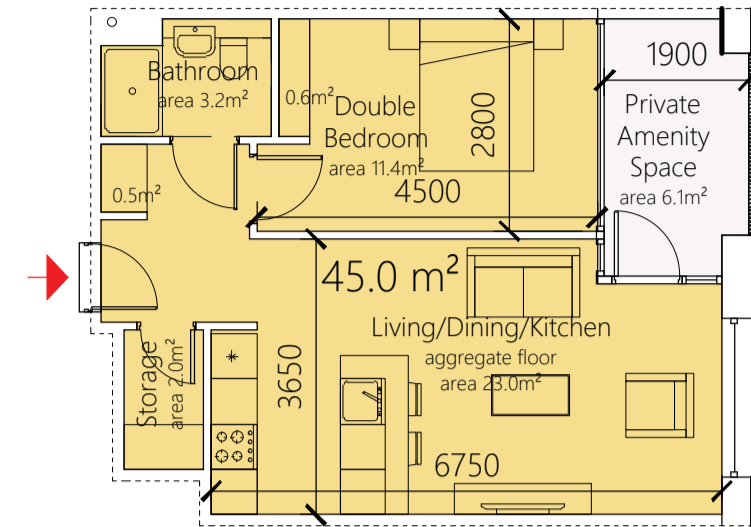


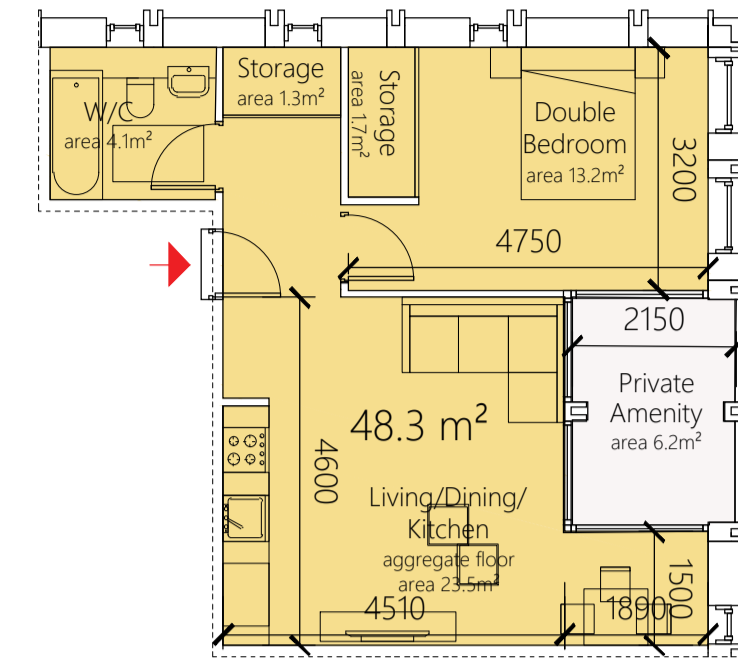
(S)1B2P a
area: 40.9m²
number of instances: 4
example unit: A.0.4



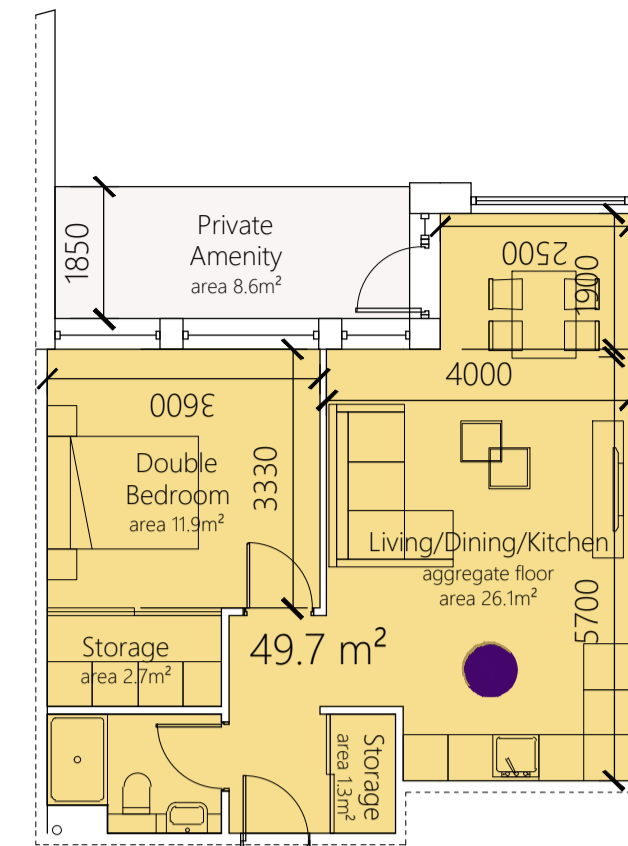
(S)1B2P b
area: 45.6m²
number of instances: 2
example unit: A.0.1



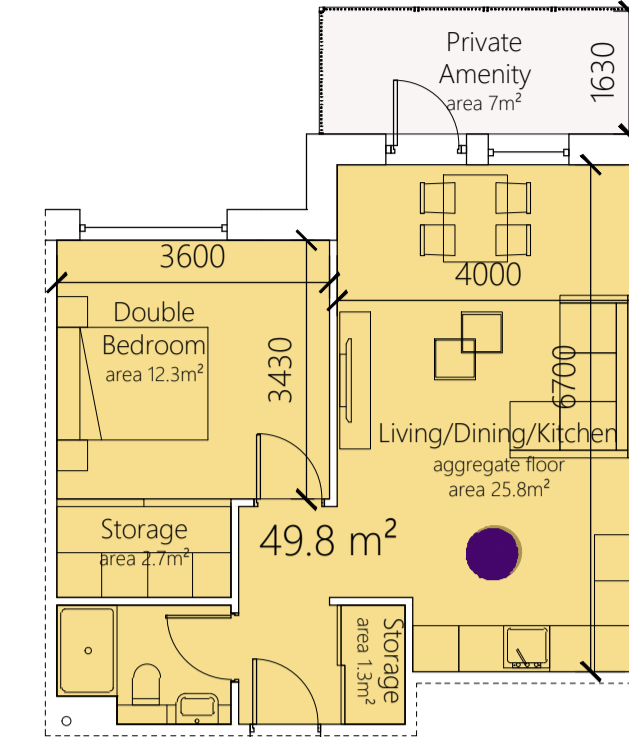
1B2P a
area: 45m²
number of instances: 4
example unit: B.2.27



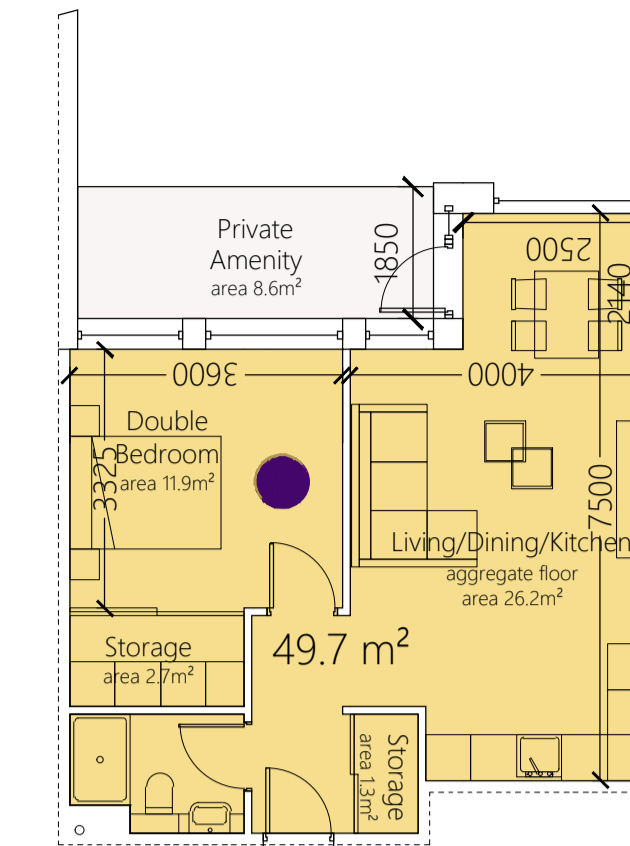
1B2P b
area: 48.3m²
number of instances: 3
example unit: C.7.66



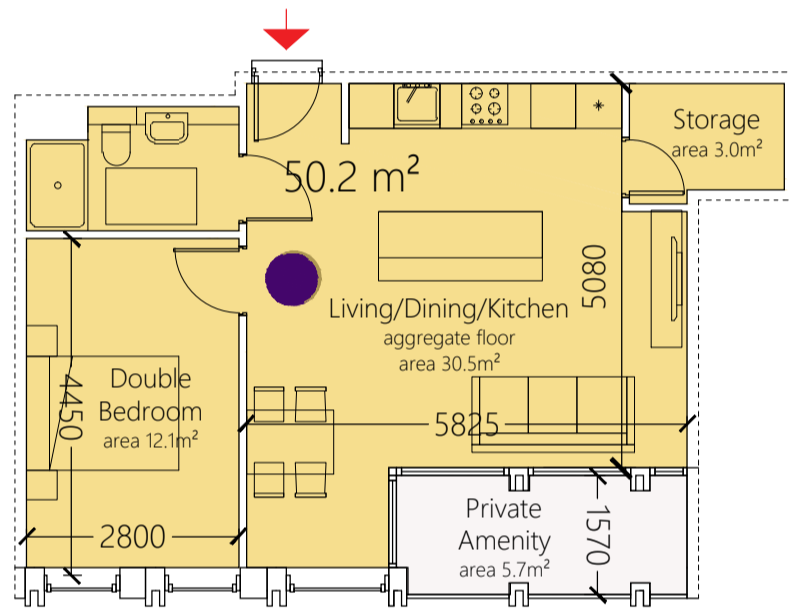
1B2P c
area: 49.7m²
number of instances: 1
example unit: B.0.7



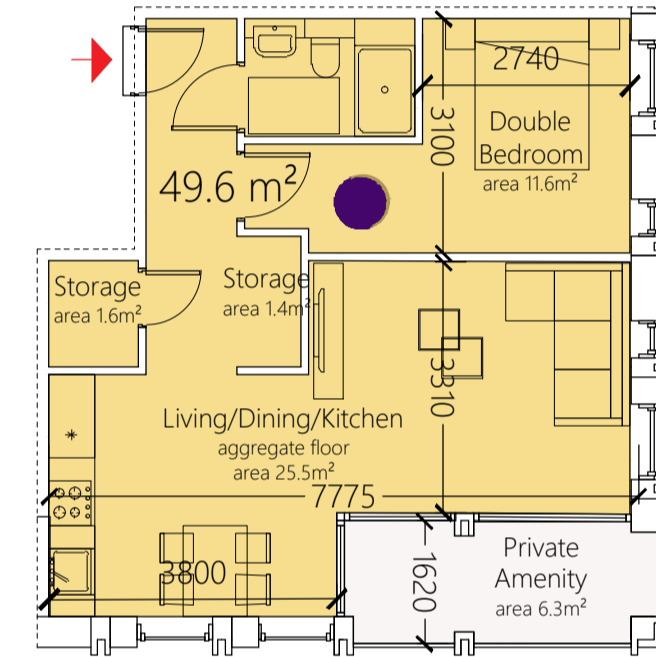
1B2P d
area: 49.8m²
number of instances: 10
example unit: A.1.14



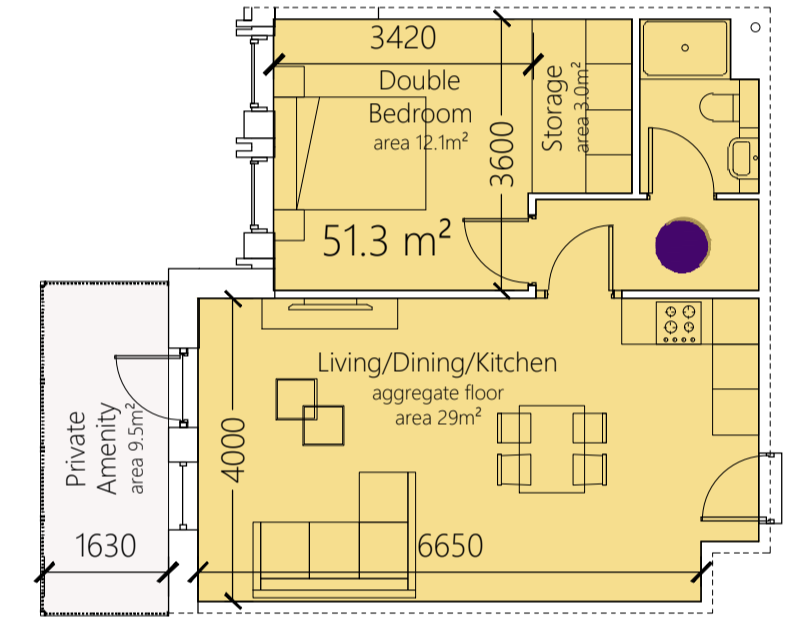
1B2P e
area: 49.7m²
number of instances: 1
example unit: B.1.16



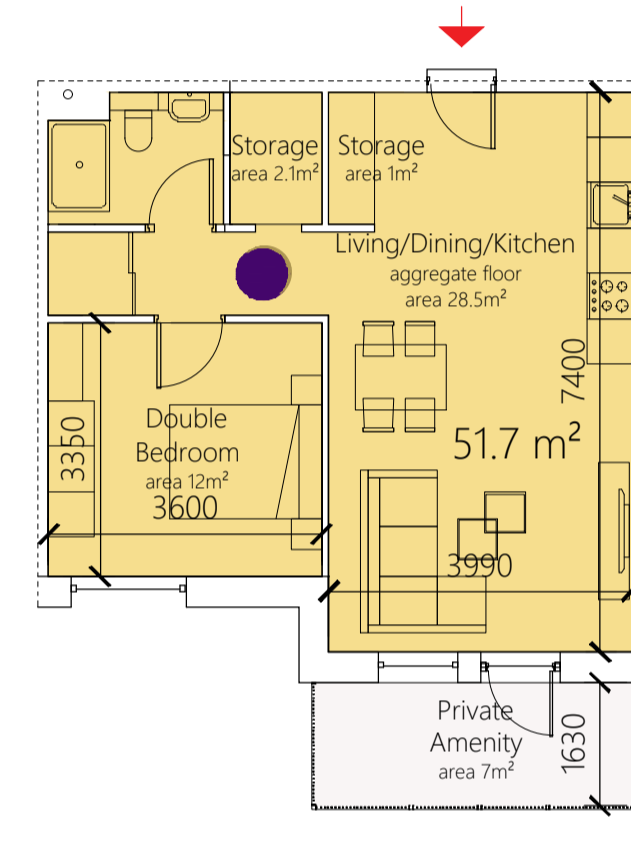
1B2P f
area: 50.2m²
number of instances: 2
example unit: C.7.68



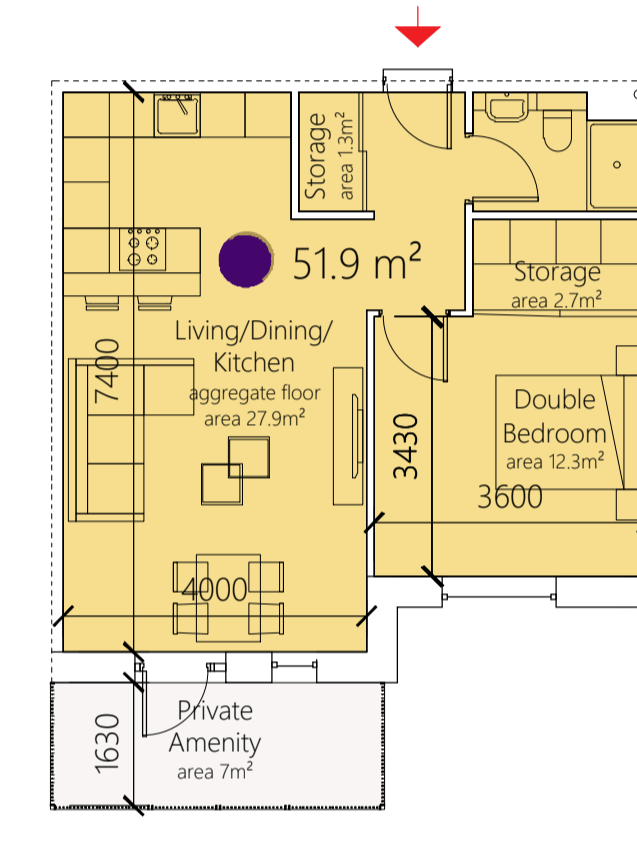
1B2P g
area: 49.6m²
number of instances: 2
example unit: C.7.67



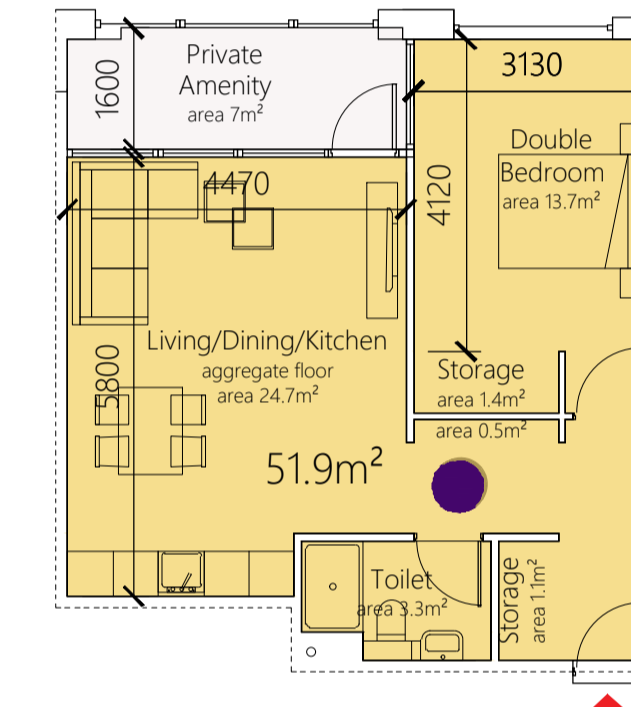
1B2P h
area: 51.3m²
number of instances: 5
example unit: A.1.11



1B2P i
area: 51.7m²
number of instances: 21
example unit: C.1.7



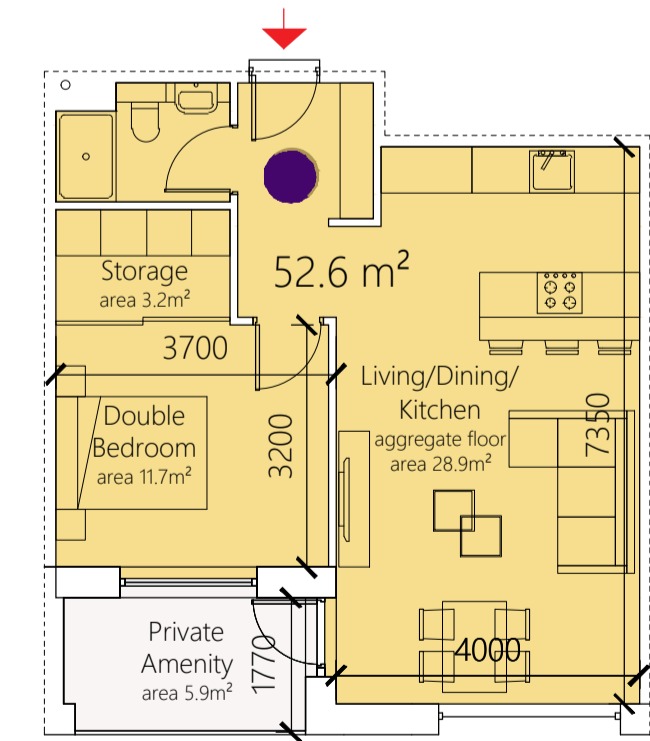
1B2P j
area: 51.9m²
number of instances: 11
example unit: C.1.14



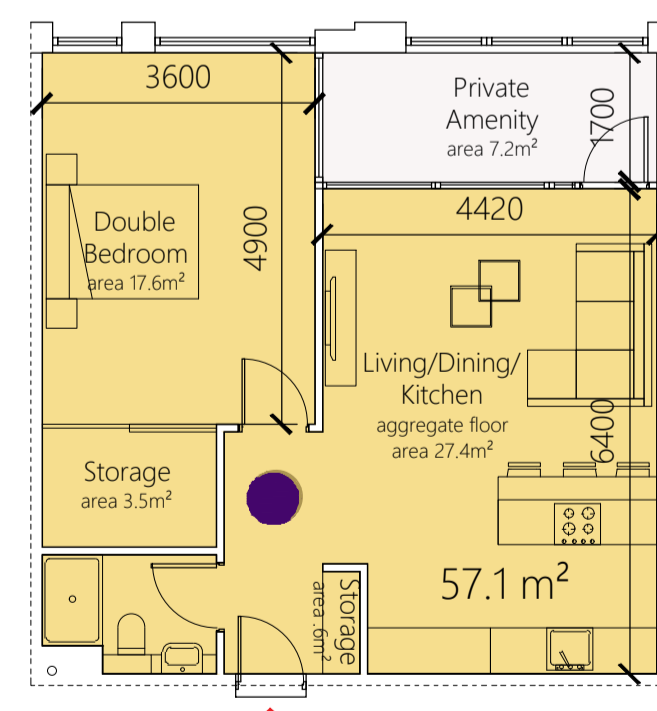
1B2P k
area: 51.9m²
number of instances: 9
example unit: B.1.13



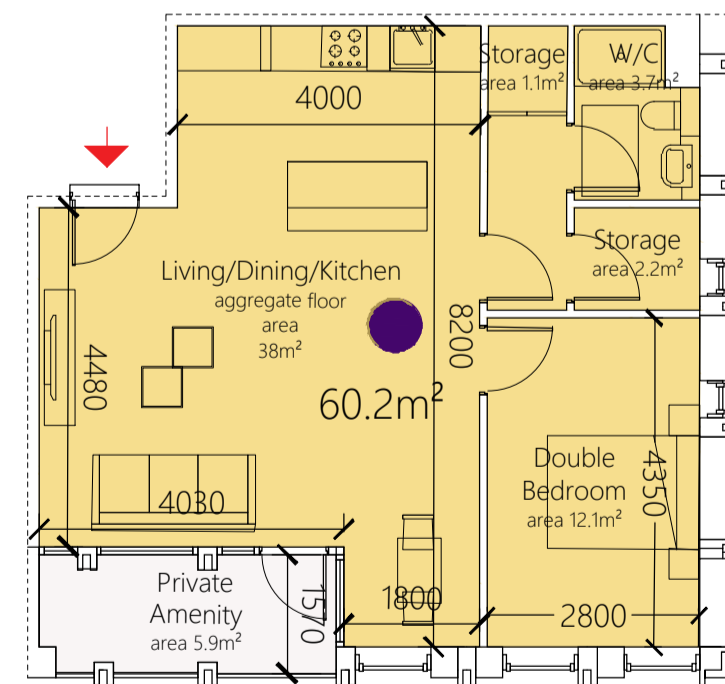
1B2P l
area: 51.3m²
number of instances: 5
example unit: B.2.29



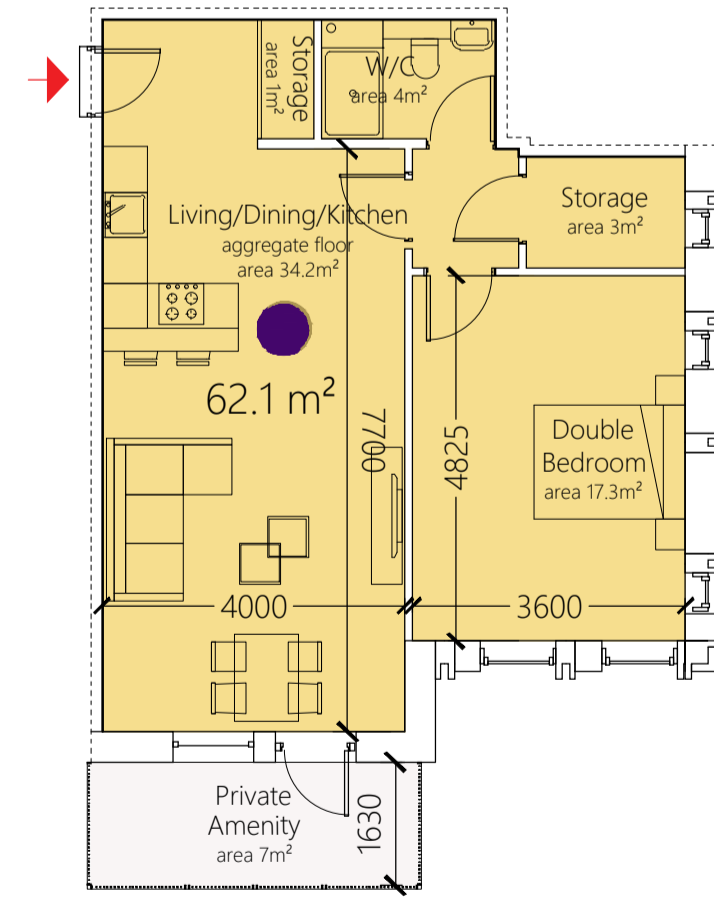
1B2P m
area: 52.6m²
number of instances: 10
example unit: C.0.2



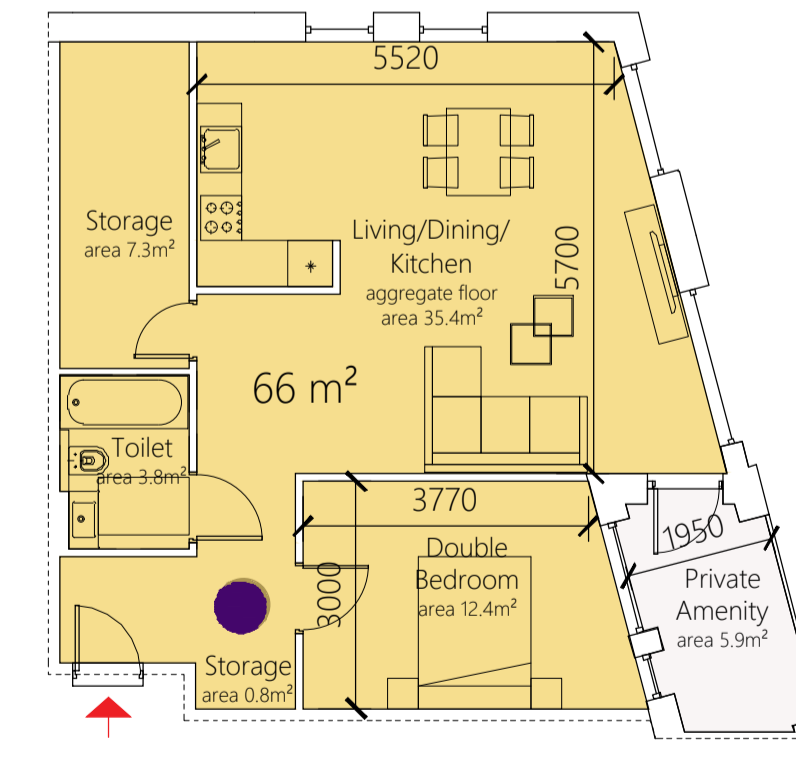
1B2P n
area: 57.1m²
number of instances: 1
example unit: B.0.4



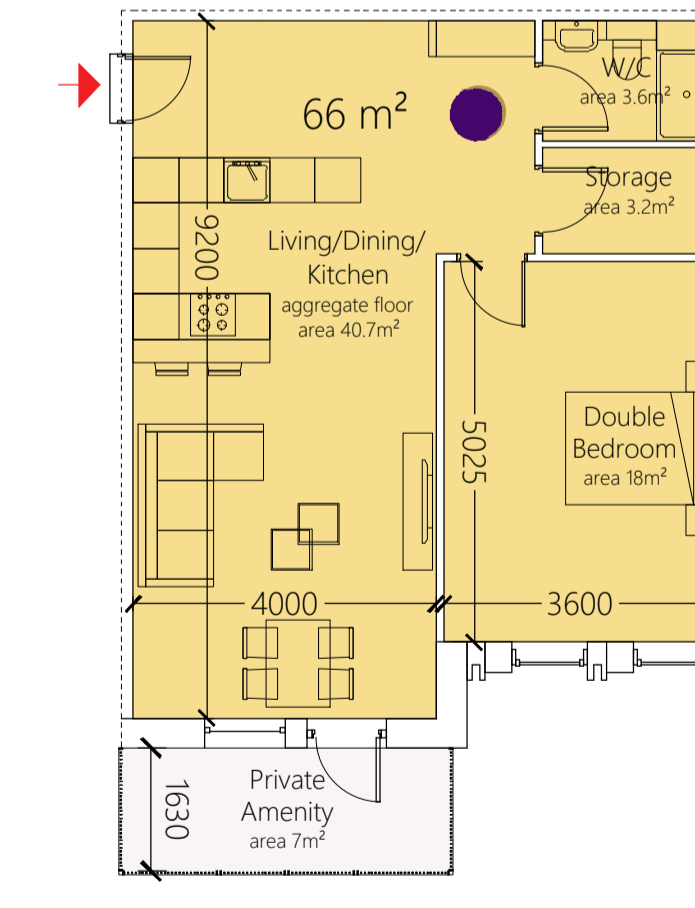
1B2P o
area: 60.2m²
number of instances: 1
example unit: D.6.64



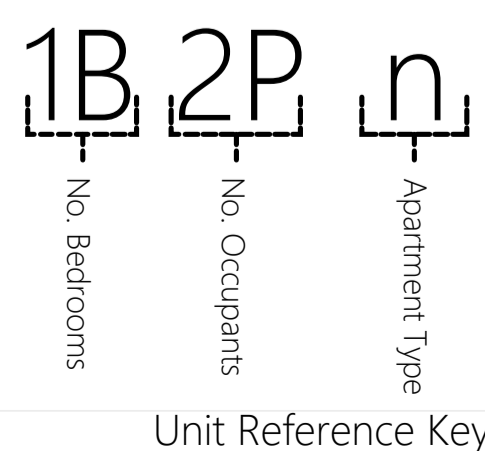
1B2P p
area: 62.1m²
number of instances: 5
example unit: A.1.13



1B2P q
area: 66m²
number of instances: 10
example unit: B.0.5



1B2P r
area: 66m²
number of instances: 10
example unit: C.1.9



- Studio Apartment
- 1 Bedroom Apartment
- 2 Bedroom Apartment
- 3 Bedroom Apartment

Apartment area 10% over minimum required area

1:100 A1